

# Dell™ Statistica™ 13.1

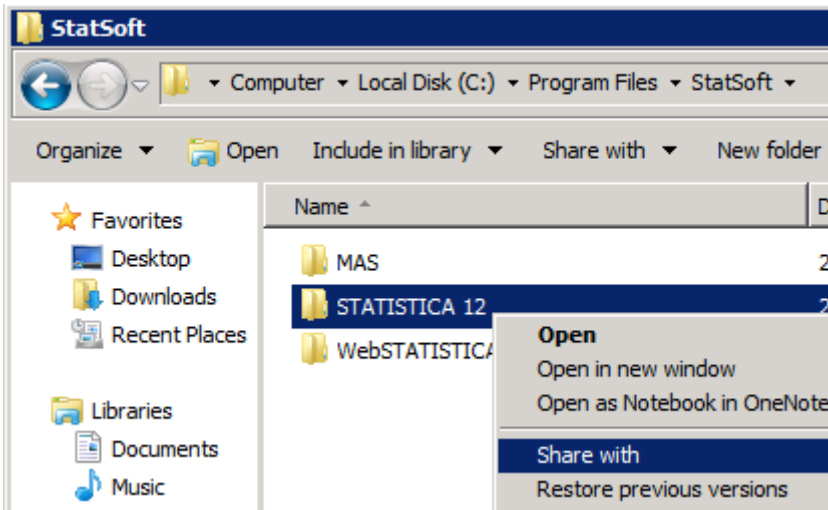
## Concurrent Network License Domain-Based Registration Installation Instructions

- 1 The installation of the Concurrent network version entails two parts: a) a server installation, and b) workstation installations on each of the client machines.
- 2 The server installation must be performed by a user with Administrator permissions to the server. The installation makes necessary changes to the system. Each client installation must be performed while logged on as an Administrator to the client computer. If you are prompted to reboot during the installation, you must log on with Administrator permissions after rebooting to complete the installation successfully.
- 3 If you have a previous version of Statistica on your computer, uninstall the program (see the *Server uninstall* and *Workstation uninstall* sections for uninstall instructions). Note that this method of removing Statistica will not affect or delete any data files created with previous installations. Once this is complete, proceed with the installation instructions.
- 4 All workstations must have Microsoft™ Internet Explorer version 7 or later installed.
- 5 The server must be installed to a Windows™ Server 2008 R2 operating system or later.
- 6 This software performs an automatic license registration online. Therefore, it is necessary to perform this installation on a computer that is connected to the Internet.

## Server installation

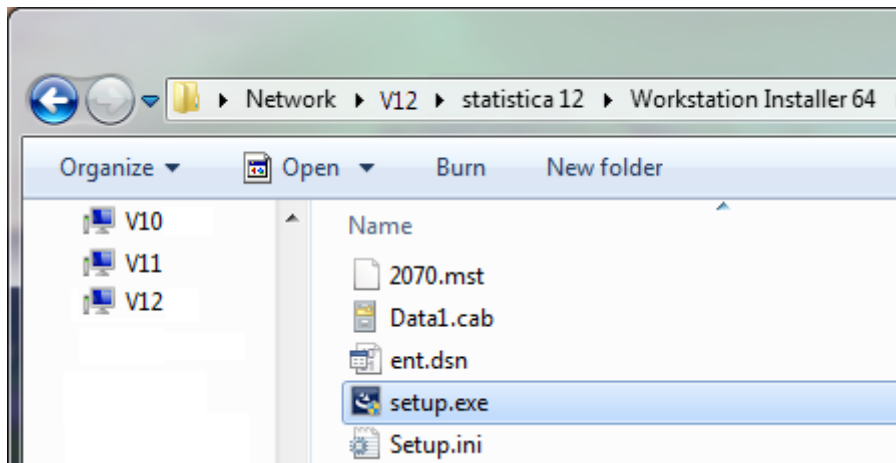
- 1 Ensure that no other applications are running.
- 2 Download the program from <https://support.software.dell.com/statistica/>, and then double-click **setup.exe** to begin the installation process. Or, insert the Statistica DVD into the drive. The installation process should begin automatically, and the Statistica installation dialog box will be displayed. Click the **Install Statistica** button. Note: If the DVD does not auto-start, browse the DVD and double-click **CDSTART.exe**.
- 3 The **Welcome** dialog box is displayed. Click the **Next** button.
- 4 In the **Serial Number / Product Key** dialog box, enter the Serial Number and 25-character Product Key in the respective boxes. Note: It is important to use the complete keyset as provided by Dell. Click the **Next** button to continue.
- 5 In the **Network ID / Install Code** dialog box, enter the Install Code (note that a Single-User installation does not require a Network ID). Click the **Next** button to continue.
- 6 In the **License Agreement** dialog box, read the software license agreement. Select the **I accept the terms in the license agreement** option button, and click the **Next** button if you agree with the terms and want to continue the installation process.
- 7 In the **Setup Type** dialog box, select either the **Typical** option button or the **Custom** option button. Typical setup will install Statistica with the most common options; this is the recommended selection. Custom setup options are not covered in these instructions. If you have questions about the custom installation, contact Statistica technical support: <https://support.software.dell.com/statistica/>. Click the **Next** button to continue.
- 8 In the **Start Menu Folder** dialog box, enter the Start Menu folder name; the default name is Statistica 13. If you want to create a desktop shortcut to Statistica, select the check box. Click the **Next** button to continue.
- 9 A message will be displayed that prompts you to enable your wireless network adaptor. If your computer has a wireless network adaptor, please enable it until installation is complete in order to ensure proper licensing of the software. Once it is enabled, click the **OK** button.

- 10 In the **Register with Dell** dialog box, enter the requested information. This information is required to obtain the final licensing file for your software. Click the **Next** button to continue.
- 11 In the next dialog box, you will be informed that your license registration is pending and that a registration email has been sent to you.
- 12 Open your company (or university) email application. Go to your Inbox and open the registration email from [license@statsoft.com](mailto:license@statsoft.com) or [license@software.dell.com](mailto:license@software.dell.com). The email will ask you to verify your email address in order to continue the installation of Statistica. Click on the hyperlink in the email. Alternately, you can copy and paste the link, in its entirety, into the address bar of your web browser.  
  
Note: If you do not receive an email from [license@statsoft.com](mailto:license@statsoft.com) or [license@software.dell.com](mailto:license@software.dell.com), look in your Junk E-mail folder. Due to the hyperlink in the email, your email application may have flagged the email as spam. Or, there may be an issue with your internet connection or firewall.
- 13 In your web browser, the Statistica Email Address Confirmation Web page is displayed. Your email address has been confirmed.
- 14 Return to the installer and click the **Continue** button to finish the installation of Statistica. If you have closed the installer, restart it and continue.
- 15 Statistica will now attempt to register your software automatically. A dialog box stating that your license has been successfully registered is displayed. Click the **OK** button. If the registration process fails, a different dialog box is displayed, indicating the failure. See the **Notes on failed registration** section for additional details of failed registration.
- 16 Statistica is ready to install. To begin copying files to your machine, click the **Install** button.
- 17 You should receive a message stating that the installation is complete. You may be prompted to reboot now or reboot later, depending on the components that were installed on your machine. If you are prompted, it will be necessary to reboot before you run Statistica. Click the **Finish** button to complete the installation process.
- 18 Create a share to the Statistica executable directory. This share must be available to all users who need to run the workstation installation. Users must have read and execute permissions to all files and subfolders.



## Workstation installation

- 1 Ensure that no other applications are running.
- 2 Locate the share that you created (step 18 in the *Server installation* section) when the Statistica program files were installed on the server. Double-click the **Setup.exe** file in Workstation Installer or Workstation Installer 64 subfolder.



- 3 The Welcome dialog box is displayed. Click the **Next** button.
- 4 In the **License Agreement** dialog box, read the software license agreement. Select the **I accept the terms in the license agreement** option button, and click the **Next** button if you agree with the terms and want to continue the installation process.
- 5 In the **Setup Type** dialog box, select either the **Typical** option button or the **Custom** option button. Typical setup installs Statistica with the most common options; this is the recommended selection. Custom setup options are not covered in these instructions. If you have questions about the custom installation, contact Statistica technical support <https://support.software.dell.com/statistica/>. Click the **Next** button to continue.
- 6 In the **Start Menu Folder** dialog box, enter the Start Menu folder name; the default name is Statistica 13. If you want to create a desktop shortcut to Statistica, select the check box. Click the **Next** button to continue.
- 7 Statistica is ready to install on your workstation. To begin copying files to your machine, click the **Install** button.
- 8 Your system will be updated and program files will be installed. In the **Setup Wizard Completed** dialog box, click the **Finish** button.
  - If you receive any Version Conflict messages, it is recommended that you keep your existing file (click the **Yes** button).
  - If the workstation's system files need to be updated, you must restart your computer to finish the installation process.

## Borrowing (checking out) licenses

Borrowing licenses enables you to disconnect a workstation from the network and still be able to run Statistica on that workstation. To borrow (check out) a license:

- 1 Start Statistica on the workstation.
- 2 Select the **File** tab. In the left panel, select **Help/Support**. In the right panel, under the **About Dell Statistica** heading, click **More Details**.
- 3 In the **About Dell Statistica** dialog box, select the **License** tab, and click the **License Management** button.
- 4 In the **License Management** dialog box, highlight the feature to be checked out, and click the **Check-out** button.
- 5 The **Check-out Product** dialog box is displayed. Enter the number of days that the license will be checked out. Click the **OK** button.
- 6 Repeat Steps 4 and 5 for any additional features you want to check out. Click the **Done** button.

- 7 Quit Statistica and wait approximately 30 seconds for the license administration to synchronize with the server.
- 8 You can now disconnect the workstation from the network. Statistica can be used on that workstation for the number of days specified in Step 5.

## Checking in licenses

- 1 Reconnect the workstation to the network.
- 2 Start Statistica on the workstation.
- 3 Select the **File** tab. In the left panel, select **Help/Support**. In the right panel, under the **About Dell Statistica** heading, click **More Details**.
- 4 In the **About Dell Statistica** dialog box, select the **License** tab, and click the **License Management** button.
- 5 Highlight the feature to be checked in and click the **Check-in** button. To check in all licenses, click the **Check-in All** button. Click the **Done** button.
- 6 Quit Statistica, and wait approximately 30 seconds for the license administration to synchronize with the server.
- 7 The previously checked-out licenses are now available to all Statistica workstations.

## Server uninstall

To uninstall the Statistica server, follow these steps:

- 1 Ensure that no other applications are running.
- 2 In the Control Panel, select **Add or Remove Programs** (Windows Server 2003) or **Uninstall a program** located under **Programs** (Windows Server 2008).
- 3 Scroll down through the list of programs and select Statistica. Click either **Remove** (Windows Server 2003) or **Uninstall** (Windows Server 2008) to uninstall the program.
- 4 A message is displayed to confirm that you want to uninstall Statistica from your computer. Click the **Yes** button, and Statistica files will be uninstalled.
- 5 When the uninstall process is complete, click the **Yes** button to notify the registration server. This makes it possible for you to install the server on another computer.

## Workstation uninstall

To uninstall a Statistica workstation, follow these steps:

- 1 Ensure that no other applications are running.
- 2 In the Control Panel, select **Add or Remove Programs** (Windows XP) or **Uninstall a program** located under **Programs** (Windows™ Vista, Windows 7, or Windows 8).
- 3 Scroll down through the list of programs and select Statistica. Click either **Remove** (Windows XP) or **Uninstall** (Windows™ Vista, Windows 7, or Windows 8) to uninstall the program.

# Notes on failed registration

The software registration process can fail for several reasons including: exceeding the allowed number of installations for a serial number, lack of Internet connection on the installed machine, incorrect serial number, wrong email address, or other technical difficulties.

- 1 If you want Statistica installed on an additional computer, contact Dell for information on our policy and additional pricing.
- 2 If some other issue has affected your registration, ensure that the computer is connected to the Internet, and verify your serial number. Start Statistica. If the **Statistica Licensing** dialog box is displayed, click the **Register** button. If the **Statistica Licensing** dialog box is not displayed, select the **File** tab. In the left panel, click **Help/Support**. In the right panel, under the **Support** heading, click **Register**.
- 3 If the registration process still cannot be completed, contact Dell for Technical support at <https://support.software.dell.com/statistica/>.

# About Dell

Dell listens to customers and delivers worldwide innovative technology, business solutions and services they trust and value. For more information, visit <https://support.software.dell.com/statistica/>.

## Contacting Dell

Technical Support:

<https://support.software.dell.com/statistica/>

Product Questions and Sales:

(800) 306-9329

Email:

[info@software.dell.com](mailto:info@software.dell.com)

## Technical support resources

Technical support is available to customers who have purchased Dell software with a valid maintenance contract and to customers who have trial versions. To access the Support Portal, go to <https://support.software.dell.com/statistica/>.

The Support Portal provides self-help tools you can use to solve problems quickly and independently, 24 hours a day, 365 days a year. In addition, the portal provides direct access to product support engineers through an online Service Request system.

The site enables you to:

- Create, update, and manage Service Requests (cases)
- View Knowledge Base articles
- Obtain product notifications
- Download software. For trial software, go to [Trial Downloads](#).
- View how-to videos
- Engage in community discussions
- Chat with a support engineer